

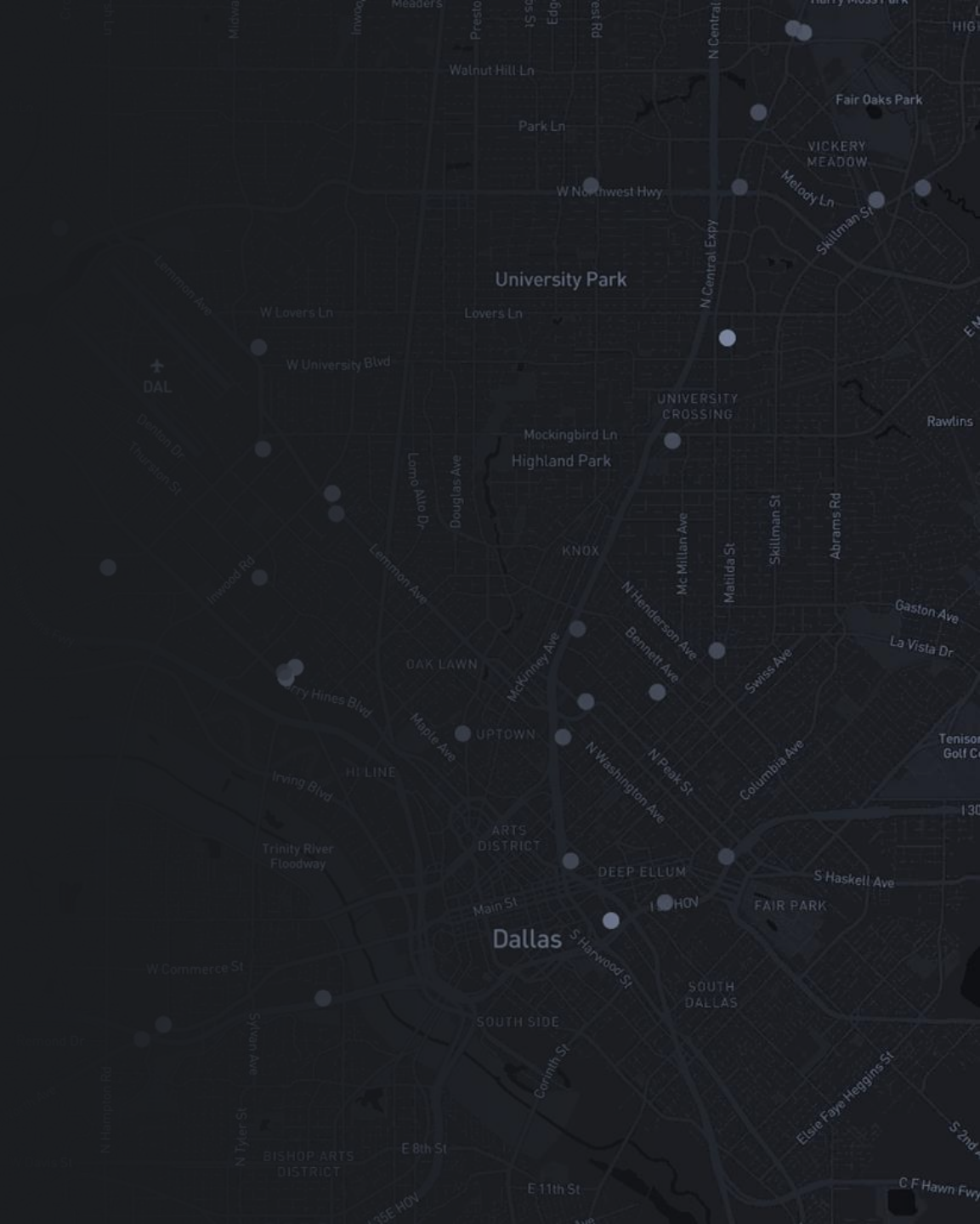
# PELION

REIT Portfolio Insights

## Rexford Industrial

March 2022

[www.pelion.co](http://www.pelion.co)



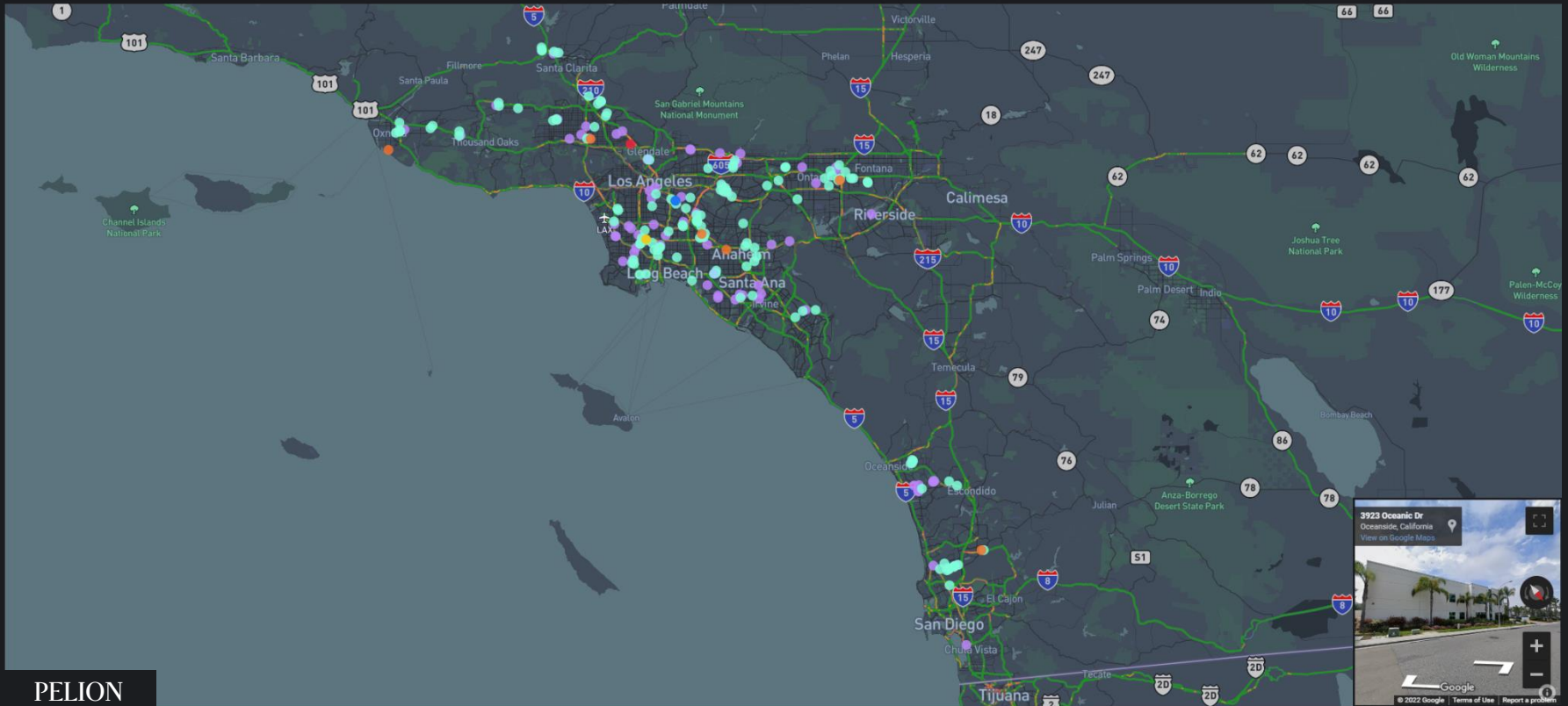
# Company Profile



Rexford Industrial is focused on creating value by investing in and operating industrial properties throughout Southern California infill markets.

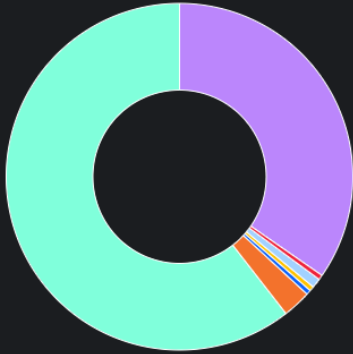
Company Type:	Public REIT	Geographic Focus:	USA, California
Sector:	Industrial	No. of Properties:	300
Asset Class Focus:	Industrial	Size (sq. ft.):	37.2M
Largest Tenant:	2.6% (Fedex)	Occupancy:	96.3%

● Industrial 
 ● Warehouse/ Distribution Center 
 ● Industrial Park 
 ● Cold Storage Unit 
 ● Manufacturing 
 ● Land 
 ● Specialty

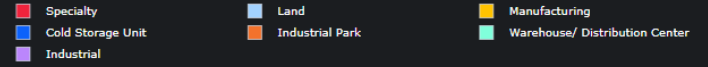


# Geographic Characteristics

## Sector Exposure



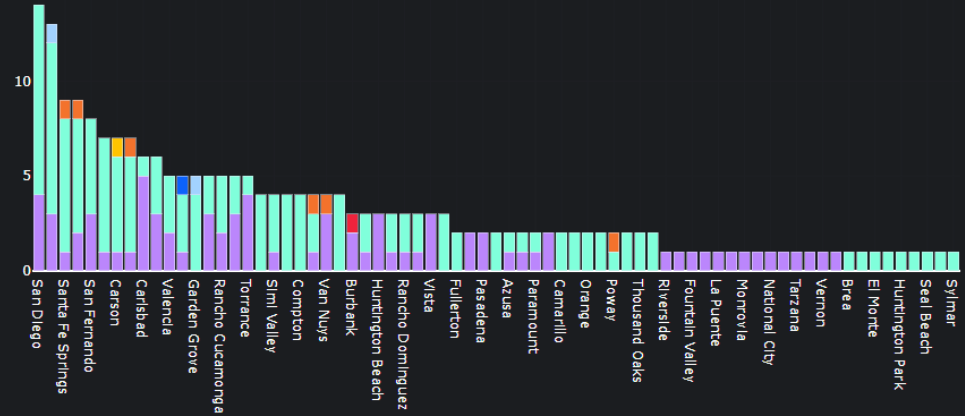
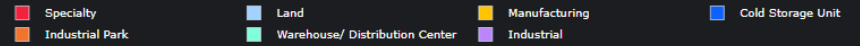
## State Exposure



## Global Exposure

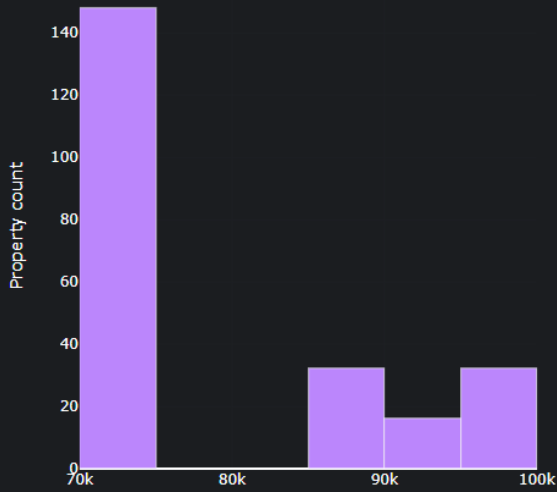


## City Exposure

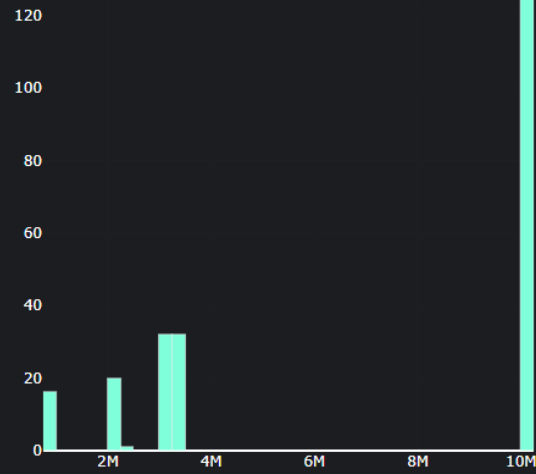


# Demographic Characteristics

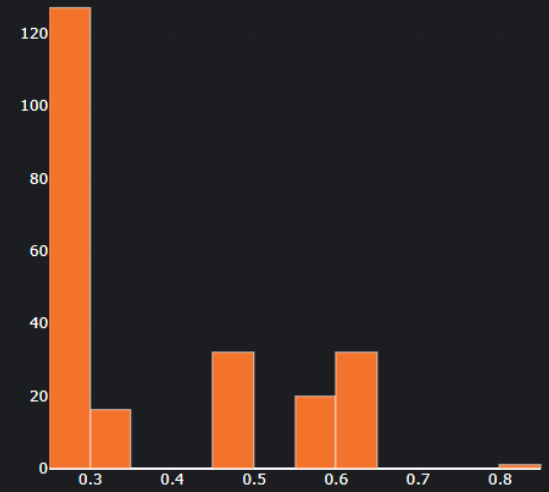
### Median Household Income



### Population

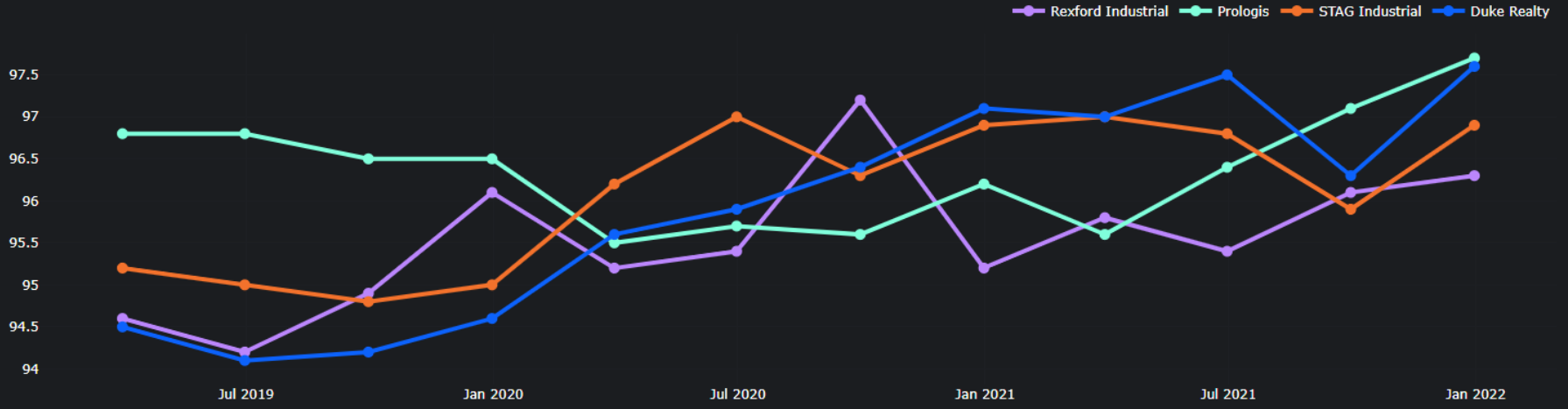


### Projected Population Change %

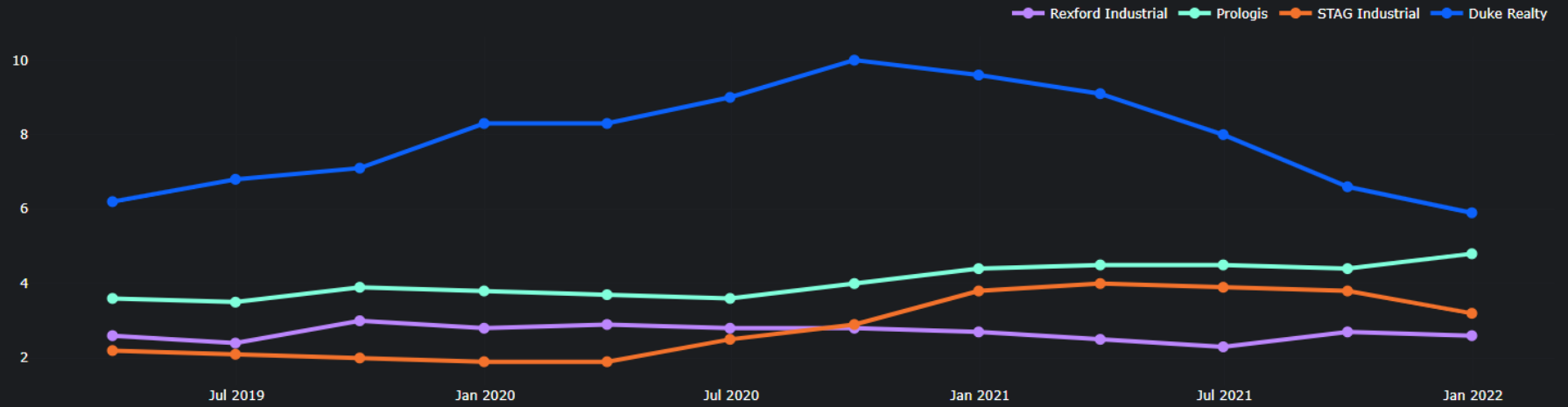


# Portfolio Performance

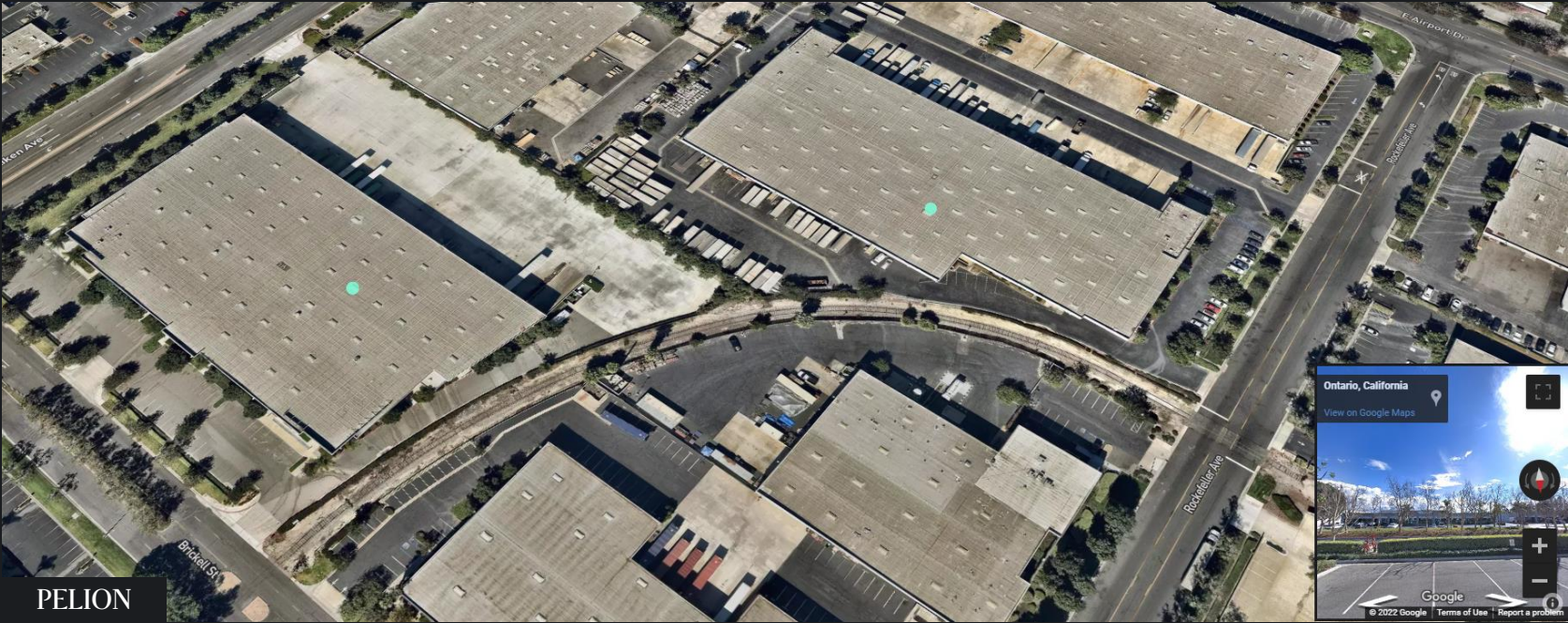
Portfolio Occupancy



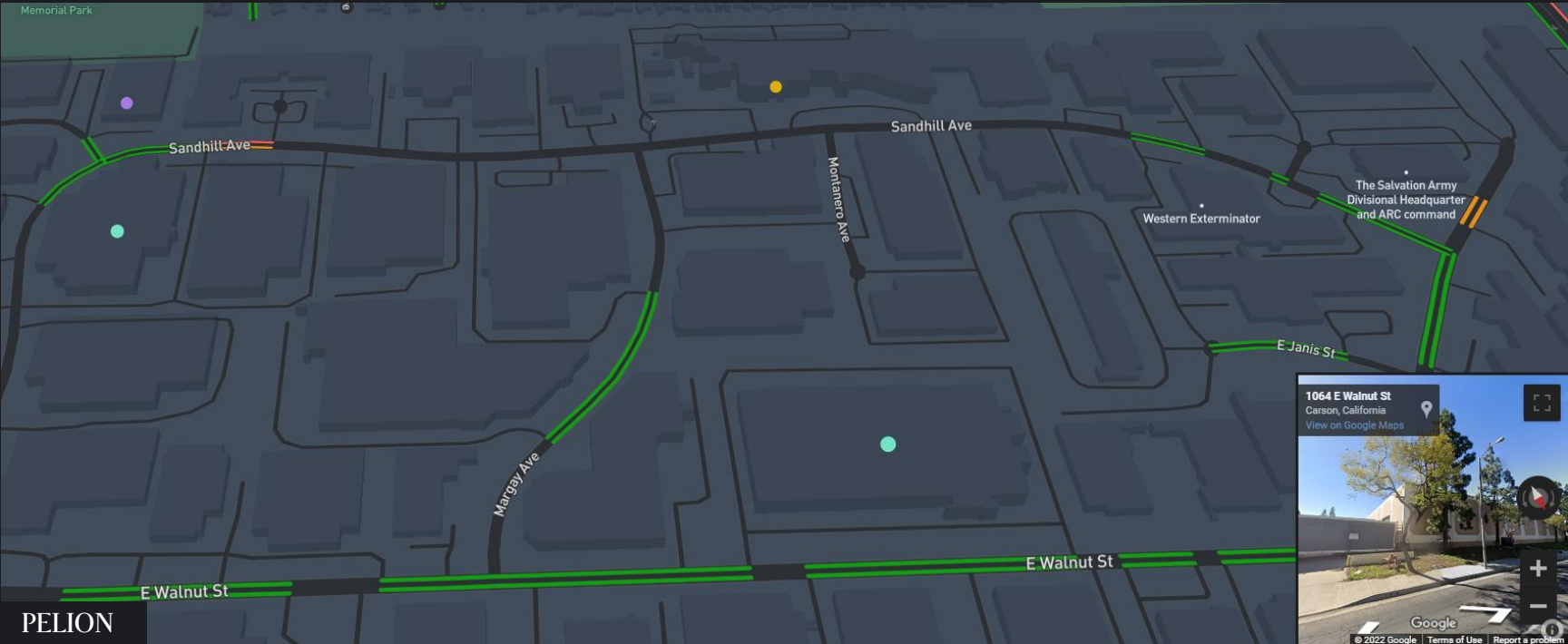
Largest Tenant %







# Sample Property – Carson, CA



PELION



# PELION

Commercial Real Estate Competitive Intelligence

[www.pelion.co](http://www.pelion.co)

[hello@pelion.co](mailto:hello@pelion.co)

# Alphabridge

[www.alphabridge.co](http://www.alphabridge.co)